

Our associates will ensure the tool works properly before you leave the store. If you experience issues with the tool while completing your project, simply bring it back to the Tool Rental Center to get a replacement. If you purchase Damage Protection at the time of your rental, you are not responsible for repair costs for tools that break due to normal use.



Video for Demonstrative
purpose only



Operators Instruction Manual

8" Grinder TG8 and RT8

Floor Grinder and Floor Grinder/Polisher



P/N (Power)

G G00142 RT8 (Electric, 1-1/2HP, 1ph, 115v Leeson)

Serial Number

Manual No. 161239 (rev 03/20)
©2020, Printed in USA

DITEQ Corporation
9876 Pflumm Road
Lenexa, KS 66215 USA
Phone: 816-246-5515
Fax: 816-246-1530
www.DITEQ.com



Completely read and fully understand the contents of this Operators Instruction Manual before attempting to operate this equipment. Death or serious injury could result from the improper use of this equipment.



Safety Message Alert Symbols --- ---

Some of the safety message in the manual are emphasized with a graphic safety message alert symbol of DANGER, WARNING or CAUTION.



Indicates an imminent hazard which, if not avoided, will result in death or serious injury



Indicates an imminent hazard which, if not avoided, can result in death or serious injury



Indicates hazards which, if not avoided, could result in serious injury and or damage to the equipment

Table of Contents

Section

Safety Symbols

General Instructions

Grinding, Polishing

Hoisting and Lifting

Hazard Symbols --- ---

Additional information as to the nature of the hazard is provided by the following hazards symbols which appear throughout the manual in conjunction with safety message alert symbols



Read the Operators Instruction Manual



Wear boots with non-slip soles to prevent slipping



Keep Guards in place during operation



Safety Glasses are required to protect eyes from flying debris.



Operation of this machine produces lethal gasses, dust and fumes.



Properly lockout machine power source during maintenance and cleaning.



Use the appropriate Respirator for the dust exposure.



Explosion Hazard



Burn Hazard and hot surface.



Wear the appropriate Hearing protection for the sound pressure levels generated



ALERT



Pinch Point from belt and pulley.



Wear the appropriate head protection



Electrical shock and electrocution hazard



Properly dispose of the dust generated by the operation of this machine.

General Instructions

For your safety and the safety of others around you, you must only operate this machine in the way it was intended.

Before operation the machine must be inspected by the operator for damaged components or loose hardware to be certain the machine is in good working order.

Before operation the job site must be inspected by the operator to identify and resolve potential hazards. The work area needs to be defined and appropriately marked.

The operator must be physically able to handle the bulk weight and power of the equipment. The operator must not be in an impaired mental state so they can exercise good judgement to maintain a safe working environment.

This floor grinder (or grinder/polisher) is a 'one person' machine. All others must keep a safe distance from the machine during operation to protect them from flying debris, noise and dust.

The work team must be appropriately instructed to be certain they can shut off the machine in an emergency and provide help to the operator.

Be certain the guards are in place and properly secured before the machine is deemed operational.

The grinder must be properly maintained following (at a minimum) the recommended maintenance schedule in this manual and the Engine/Motor manual also supplied with the machine.

Use only genuine DITEQ parts and accessories with this equipment.

Never leave the machine running unattended.

Wear appropriate Personal Protective Equipment (PPE) including safety glasses, boots, head protection and respiratory protection.

Use an effective means to control the dust generated by this machine. The TG8/RT8 (aka TEQEdge) is equipped with both a water nozzle and a dry vacuum port & dust skirt.

Gasoline Powered Equipment



The engine exhaust from this product contains chemicals known to the State of California to cause cancer, birth defects or other reproductive harm.



Do not operate gasoline powered equipment without adequate ventilation. Carbon monoxide is an invisible, odorless gas that can cause death if inhaled.

Gasoline is extremely flammable and its vapors can explode if ignited. Store gasoline only in approved containers, in well-ventilated, unoccupied areas, away from sparks, flames or direct sunlight. Do not use gasoline as a cleaning agent. Do not fill the fuel tank while the engine is hot or running, since spilled fuel could ignite if it comes in contact with engine sparks or hot parts.



Parts of the engine can become extremely hot during use. To prevent severe burns, do not touch the engine until after it has cooled.



Never tamper with the governor components or settings on the engine to increase the maximum speed. Engine RPM speeds greater than the engine rating can be dangerous and damage the equipment.

Electrical Powered Equipment



Be certain the equipment is properly grounded and a Ground-Fault Circuit Interrupter (GFCI) is used to protect the operator from Electrical Shock or Electrocution.

Be certain all electrical cables and connectors are in good condition and correctly sized for both the operating current and the voltage of this equipment.

Adhere to all applicable electrical codes.

CAUTION

The TG8/RT8 Grinder/Polishers can be used with either ‘wet’ or ‘dry’ accessories. It is equipped with a vacuum port and a water hookup. Some accessories are designated as ‘wet’ only accessories and they must be used ‘wet’ or damage to the slab surface, accessory and/or equipment will result.

The effectiveness of any diamond accessories can be influenced by the slab surface conditions such as the admixtures, surface hardness, abrasiveness, aggregate size, hardness and depth, the use of topical coatings, curing compounds, sealers, densifiers and/or hardeners, etc... as well as the properties of the machine such as the disc speed (RPM), and contact pressure (the weight of the machine that is pushing on the accessories divided by the contact area of the accessories) and the properties of the diamond accessory itself such as the diamond concentration, diamond quality, the shape of the diamond crystals, size of the diamonds, arrangement/distribution of the diamonds in the accessory, and the shape of the accessory. The effectiveness of the accessory can also be influenced by the use of water to create a slurry. The slurry can be modified with an abrasive additive to the slurry to keep the diamonds open, such as sand, or the consistency of the slurry from the amount of water that is used.

WARNING

Concrete Slurry can create a slip hazard. Post appropriate warnings and minimize the access to the working area to protect bystanders. Wear appropriate footwear and maintain sure footing. Keep the area clean by using a slurry vacuum or other appropriate methods.

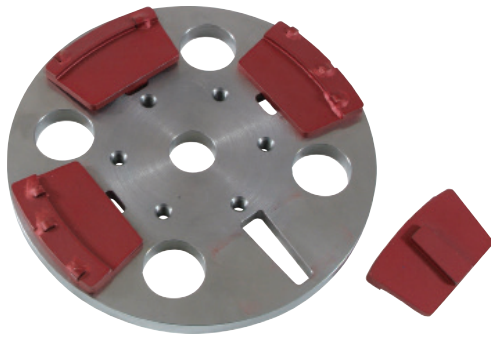
Adjusting the dust skirt height for different accessories

Be certain to adjust the height of the dust skirt to match the accessory height. If the skirt is too low, it can prevent the accessory from fully contacting the slab. If the skirt is too high, it might not be effective in retaining/capturing the dust.

The skirt should have between approximately 1/32 to 1/8 inch gap from slab surface.



PCD's



Polycrystalline diamonds (PCD's) are used for removing coatings. They are direction sensitive meaning it matters which direction they are spinning. If they turn the wrong way it will damage the PCD's. They are typically designated as Left (LH) or Right (RH) hand.

Be certain to keep the disc rotationally balanced by matching the accessory on the opposite side of the disc. It is ok to run a mixed set of PCDs as shown in the picture on the left, as long as the 2-chip and the 3-chip PCD's are across from each other.

PCD's can be damaged by hitting obstructions or discontinuities in the slab surface. Be certain to inspect the floor and mark/avoid any areas of the slab that may cause premature damage to the PCD's.

CAUTION

Polycrystalline Diamonds (PCD's) can damage a concrete slab surface. They can be very aggressive, so be careful in how and/or where they are used to prevent damage to the slab surface.



Be certain to keep the guards in place when using the PCD's because flying debris generated by the PCDs can cause injury.

Eye protection **MUST** be worn by anyone near the machine when the machine is in operation.



On variable Speed models, be certain the proper rotation for the PCD is made via the FWD/REV switch.

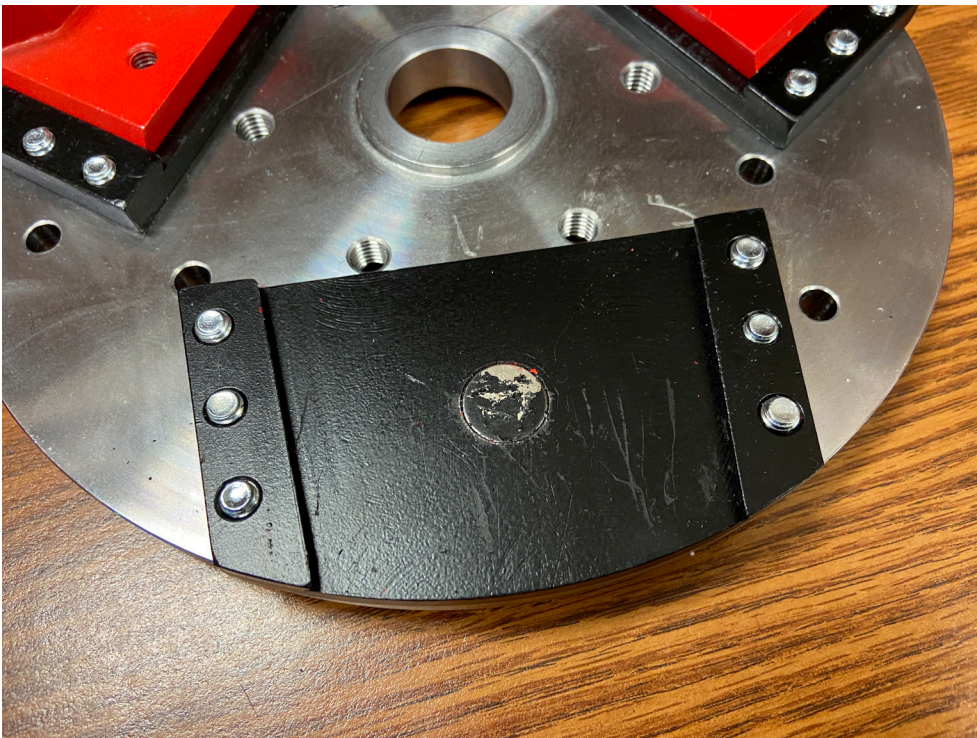
Typical polished concrete surfaces are treated with a synergistic coating called a densifier applied to the slab surface around the 200G resin step. The densifier soaks into the top surface of the concrete and bonds to the molecular structure in the concrete slab surface and hardens the slab surface. DITEQ offers the DI-Hard Densifier.

Some of the 2" velcrobacked accessories for the TG8/RT8 are designated as a WET only or DRY only or WET/DRY. These designations are based mainly on performance and life of the accessory but in some cases the water will keep the accessories cool and if they get too hot they can damage the accessory or the slab surface. Some of the DRY only accessories can have a very short life when used wet. Please be cautious in using the correct accessory for the jobsite conditions.

The final step in the diamond grit progression with define the level of shine. The 400G is a matte shine, 800G a satin, 1500G a gloss and 3000G in a high gloss shine.

The concrete surface can be treated with an oleophobic top sealing semitopical coating to help protect it from stains quickly penetrating and marking the slab before they can be cleaned up in a timely manner. DITEQ offers the DI-Gard for this addition protection. Be certain to follow the directions before applying this coating.

Polished concrete slabs should be maintained and cleaned with a neutral cleaner. DITEQ also offers the daily cleaner and a heavy duty degreaser for use with mop-and-bucket or automatic scrubbing machines. Contact DITEQ for additional information.



The RT8 comes with a three slot TEQ-LOK plate with Dove Tail (DT) shoes (p/n-163344)

SMI Silica and Dust Warning (rev 6-20-06)

**WARNING**

Grinding/cutting/drilling of masonry, concrete, metal and other materials can generate dust, mists and fumes containing chemicals known to cause serious or fatal injury or illness, such as respiratory disease, cancer, birth defects or other reproductive harm. If you are unfamiliar with the risks associated with the particular process and/or material being cut or the composition of the tool being used, review the material safety data sheets and/or consult your employer, the manufacturers/suppliers, governmental agencies such as OSHA and NIOSH and other sources on hazardous materials. California and some other authorities, for instance, have published lists of substances known to cause cancer, reproductive toxicity, or other harmful effects.



Control dust, mist and fumes at the source where possible. In this regard, use good work practices and follow the recommendations of the manufacturers/suppliers, OSHA/NIOSH, and occupational and trade associations. Water should be used for dust suppression when wet cutting is feasible. When the hazards from inhalation of dust, mists and fumes cannot be eliminated, the operator and any bystanders should always wear a respirator approved by NIOSH/MSHA for the materials being used.

**WARNING**

Grinding/cutting/drilling of masonry, concrete and other materials with silica in their composition may give off dust or mists containing crystalline silica. Silica is a basic component of sand, quartz, brick clay, granite and numerous other minerals and rocks. Repeated and/or substantial inhalation of airborne crystalline silica can cause serious or fatal respiratory diseases, including silicosis. In addition, California and some other authorities have listed respirable crystalline silica as a substance known to cause cancer. When cutting such materials, always follow the respiratory precautions mentioned above.



Hoisting and Lifting

WARNING

Do not lift overhead. If it falls, it could kill someone and damage property and the machine.

The TEQEdge is a lightweight machine that should be lifted by hand or with the proper rigging material to secure it before lifting it off the ground.

Use blocks under the frame to fully support the frame before strapping it to cargo hold downs.

Gasoline Engine Models

DANGER

Do not operate gasoline powered equipment without adequate ventilation. Carbon monoxide is an invisible, odorless gas that can cause death if inhaled.



The Gasoline Powered models have a kickstand option to lift the grinding head off the ground so the engine can be started without the extra load of the disc resisting.



WARNING

Never leave the engine running unattended.

Read the Engine Operators Manual to familiarize yourself with the Engine controls.

Folding up the machine



CAUTION

The TG8/RT8 handle can be folded up to store as a smaller package size.

Be certain the hardware is completely installed in both the stored state and in the operational state so the handle doesn't collapse and hurt someone or something.